



Industrial 3D Camera

Epic Eye Pixel Pro / Pro Color

Monocular Structured Light Camera | Achieving New Heights in Clear Imaging of Transparent, Reflective, and Black Objects



Striking
Anti-light capability

Accurate measurement in semi-outdoor scenes



0.2s
Instant acquisition

Blazing speed for higher



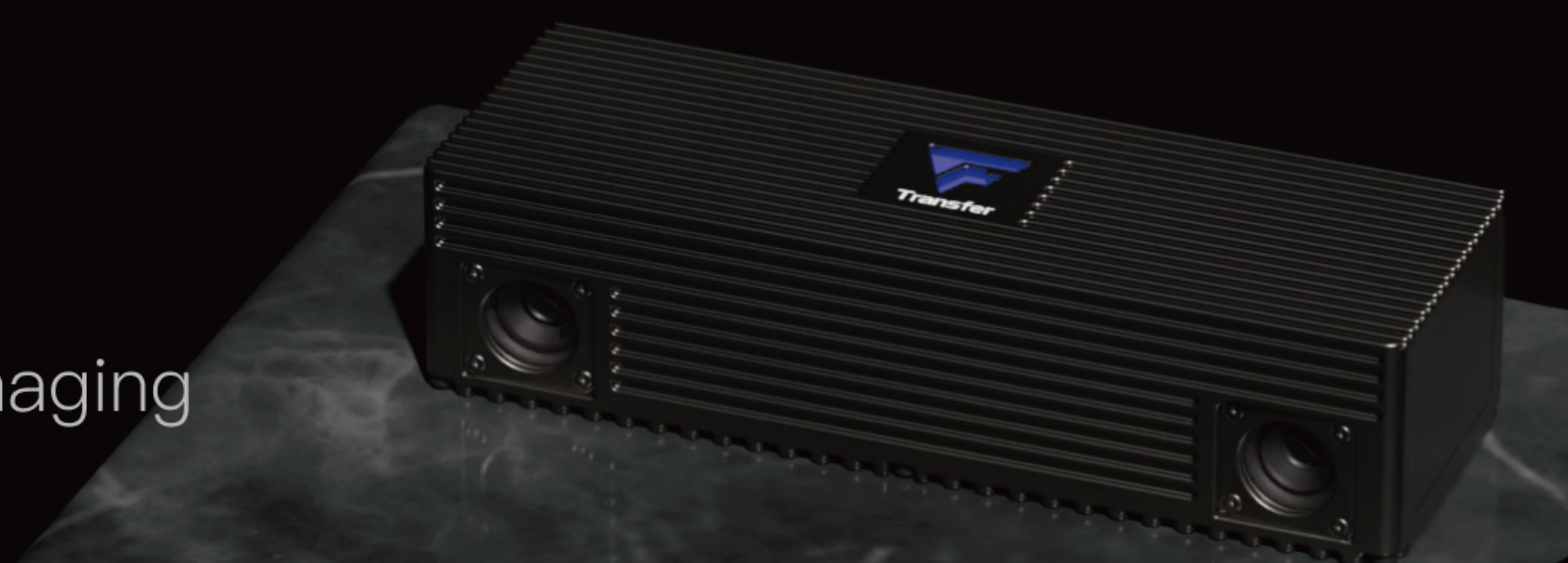
0.86KG
Featherweight

Compact and flexible for various scenarios



Ideal for transparent and reflective objects

New self-developed encoding mode for precise imaging



Reliable & Stable



Easy-to-Use



IP 65



Fast Capturing



Compact

Epic Eye Pixel Pro / Pro Color

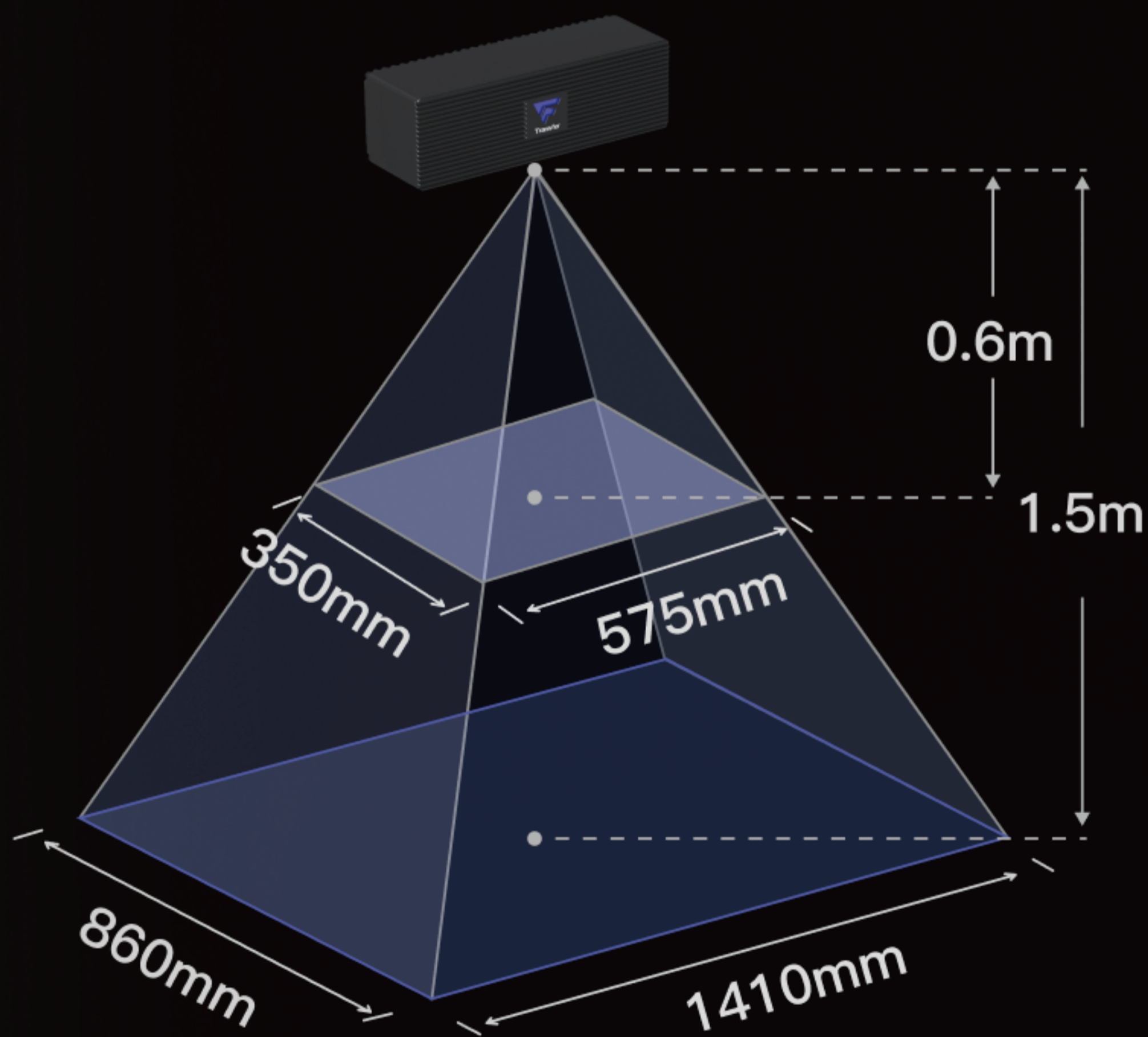
Monocular Structured Light Camera

Point Cloud



Look Further, Do more

With a super wide field of view for similar products.



Camera Parameters

Baseline	170mm
Recommended Working Distance	600–1500mm
Optimal Working Distance	1100mm
Near FOV	575mm*350mm@0.6m
Far FOV	1410mm*860mm@1.5m
VDI/VDE Measurement Accuracy	0.1mm@1.1m
Point Z-Value Repeatability	0.06mm@1.1m
Megapixels	2.3MP
Resolution	1920*1200
Typical Capture Time	0.2s–0.7s
Power Supply	24V = 2.5A
Average Power Consumption	4.5W
Standby Power Consumption	2.5W
Dimensions (L*W*H)	219*75*53mm
Installation Method	Fixed Installation / End-Effector Installation
Communication Interface	Ethernet
Light Source	Blue LED (440nm)/White LED
2D Camera	Monochrome/Color
Operating Temperature	0 – 50°C
Operating Humidity	20% – 90% RH Non-condensing
IP Rating	IP65
Cooling	Passive
Weight	0.86kg
Storage Temperature	–20 – 70°C
Storage Humidity	20% – 90% RH Non-condensing

Beijing Transfer Technology Co., LTD

Beijing Headquarters | Zhejiang Branch | Jiangsu Branch



Scan the code to learn more

www.transfer3d.com
Marketing@qianyi.ai